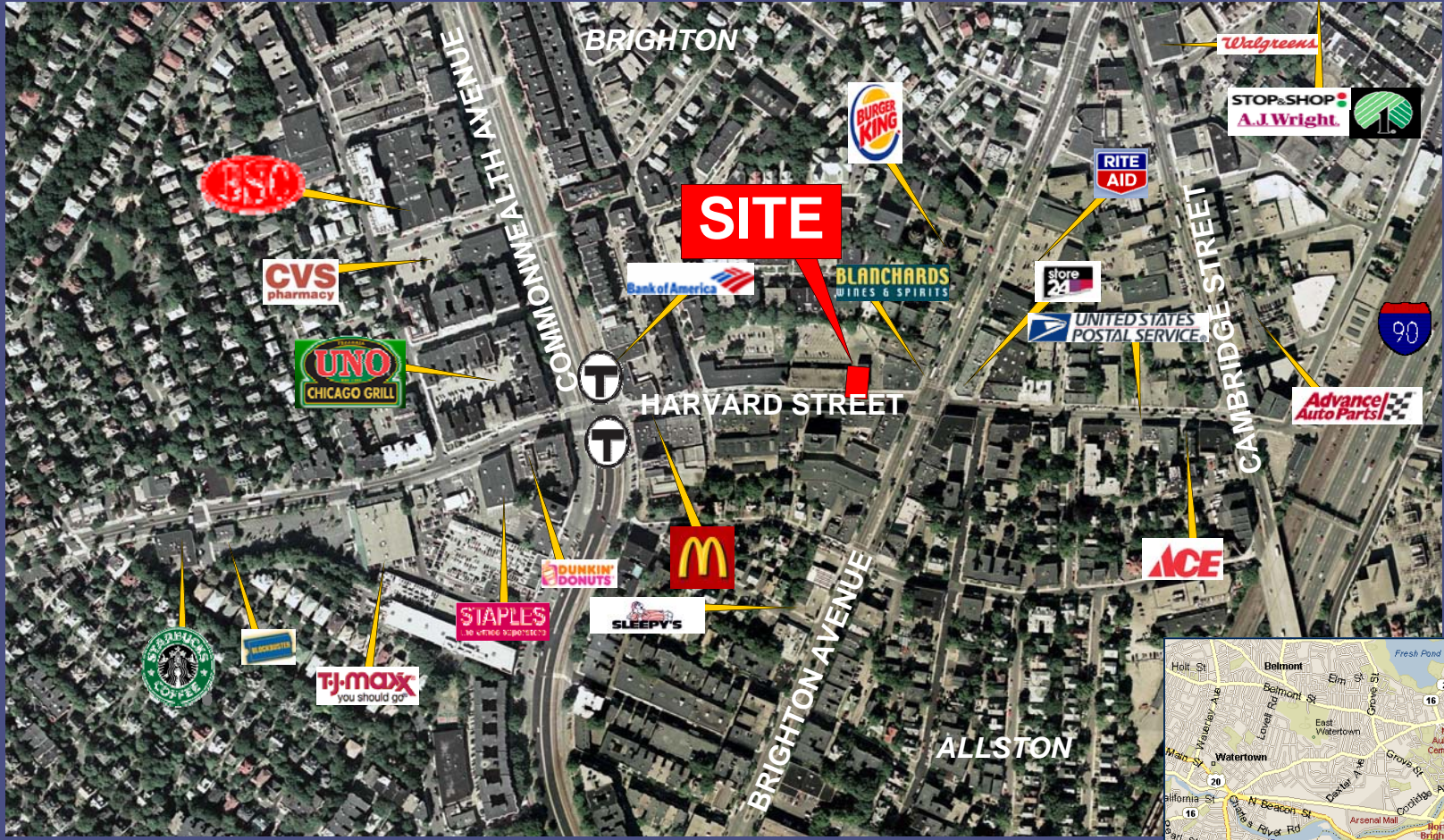


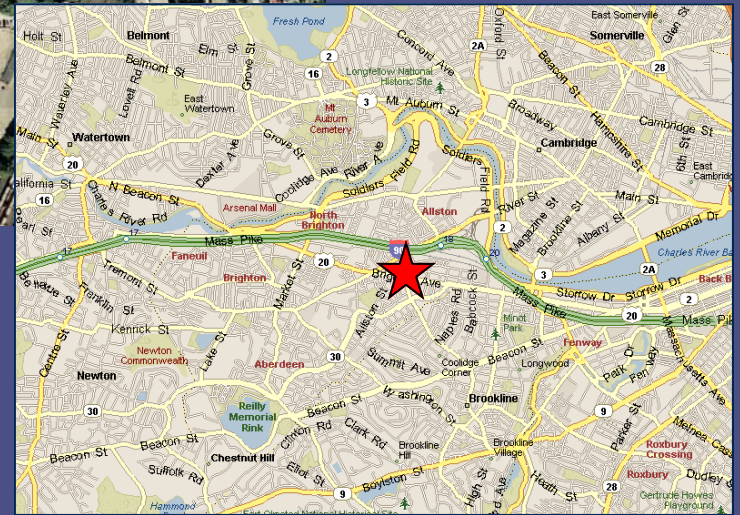
**FOR LEASE**  
**2,400 ± SF**



**121 HARVARD AVENUE (Former 7-Eleven)**  
*Allston, MASSACHUSETTS*



**RETAIL 2,400 ±SF AVAILABLE**  
PRIME RETAIL SPACE FOR LEASE IN THE HEART OF ALLSTON WITH CLOSE PROXIMITY TO BOSTON COLLEGE & BOSTON UNIVERSITY  
STEPS AWAY FROM MBTA GREEN "B" LINE  
AVERAGE DAILY TRAFFIC COUNTS OF 30,000+



**FOR MORE INFORMATION:**

**ADAM CONVISER**

Email: [adam@conviserpg.com](mailto:adam@conviserpg.com)

Mobile: (617) 593-1700

**JIM CONVISER**

Email: [jim@conviserpg.com](mailto:jim@conviserpg.com)

Mobile: (617) 839-0456

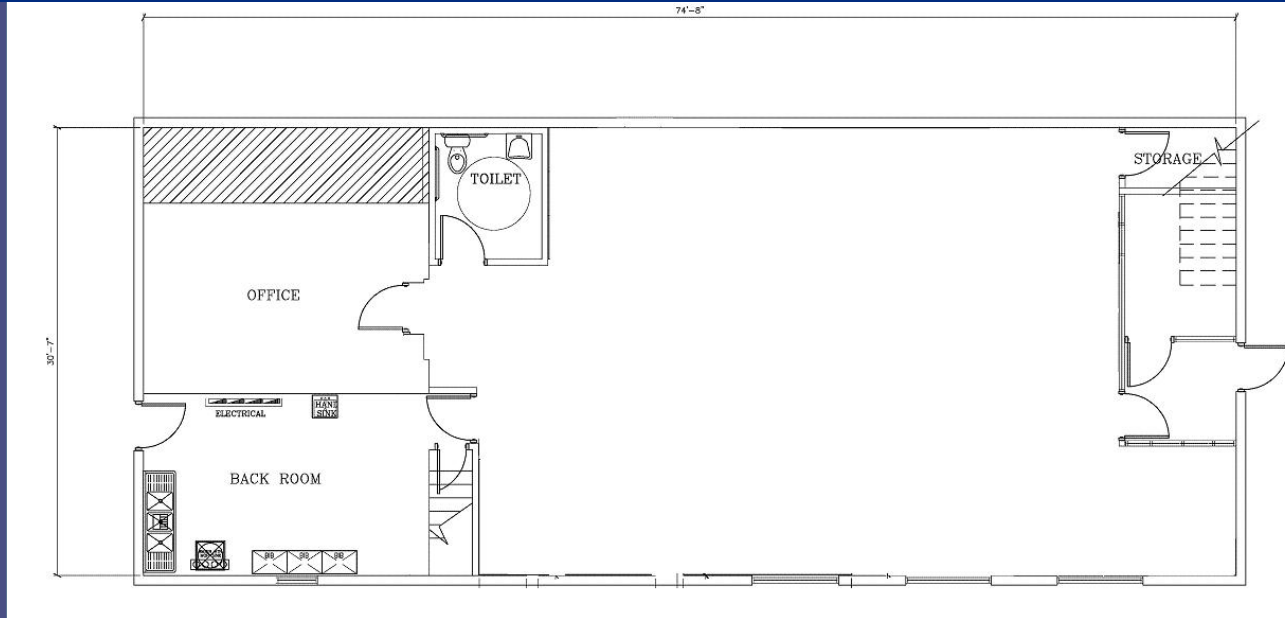
**CONVISER PROPERTY GROUP**

858 Washington Street, Suite 306 | Dedham, MA 02026

P: (781) 320-0600 | F: (617) 663-6300 | W: [www.conviserpg.com](http://www.conviserpg.com)

# 121 HARVARD AVENUE (Former 7-Eleven)

## Allston, MASSACHUSETTS



### PROJECT INFORMATION

SPACE AVAILABLE:

2,400 ± SF

AVAILABILITY:

SUMMER 2009

TRAFFIC COUNTS:

30,000 + ADT



### DEMOGRAPHIC INFORMATION

	0.5 MILE	0.75 MILE	1 MILE
POPULATION	22,986	41,686	65,327
DAYTIME POP	8,136	22,409	37,028
MEDIAN HH INC.	\$45,424	\$49,130	\$52,649
SOME COLLEGE%	78.2%	77.9%	78.9%

### FOR MORE INFORMATION:

**ADAM CONVISER**

Email: [adam@conviserpg.com](mailto:adam@conviserpg.com)

Mobile: (617) 593-1700

**JIM CONVISER**

Email: [jim@conviserpg.com](mailto:jim@conviserpg.com)

Mobile: (617) 839-0456

**CONVISER PROPERTY GROUP** 858 Washington Street, Suite 306 | Dedham, MA 02026

P: (781) 320-0600 | F: (617) 663-6300 | W: [www.conviserpg.com](http://www.conviserpg.com)