

**FOR LEASE**

**2,445 - 4,745 ± SF**



# 665 COCHITUATE ROAD

*(Route 30) Framingham, Massachusetts*



**RETAIL/ RESTAURANT  
SPACE AVAILABLE  
2,475 - 4,745 SF**

Highly visible location on Route 30 in the midst of the Natick/Framingham Retail Corridor with over 4 Million Square Feet of National Retailers within 1 Mile

The site is steps away from the entrance to the Massachusetts Turnpike with over 41,000 cars passing the site daily



**FOR MORE INFORMATION:**

**CHRISTINE DYKES** christine@conviserpg.com Mobile: (617) 966-2768

**ADAM CONVISER** adam@conviserpg.com Mobile: (617) 593-1700

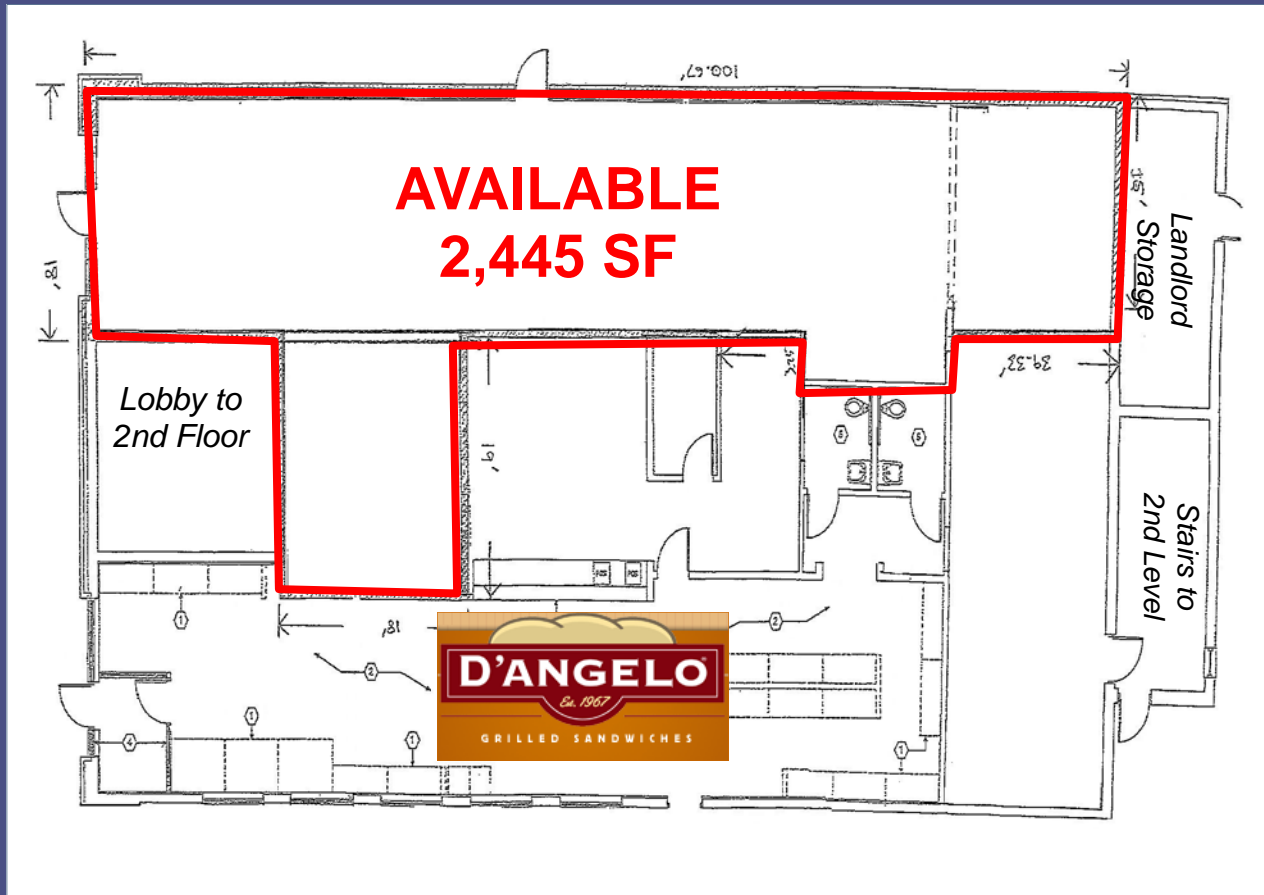
**CONVISER PROPERTY GROUP, INC.**

858 Washington Street, Suite 306, Dedham, Massachusetts 02026

Office: (781) 320-0600 Fax: (617) 663-6300 www.conviserpg.com

No warranty or representation, expressed or implied, is made as to the accuracy of the information contained herein, and same is submitted subject to errors, omissions, change in price, rental or other conditions, or withdrawal without notice.

# 665 COCHITUATE ROAD (Route 30) Framingham, Massachusetts



## PROJECT INFORMATION:

RETAIL GLA: 4,745 ± SF  
 SPACE AVAILABLE: **2,445 ± SF**  
**4,745 ± SF ENTIRE 1ST LEVEL**  
 AVAILABILITY: FALL 2009  
 NNN COSTS: \$4.93/ SF  
 TRAFFIC COUNTS: 41,000 ADT- COCHITUATE ROAD  
 35,300 ADT - SPEEN ST

## DEMOGRAPHIC INFORMATION:

|                  | <u>1 MILE</u> | <u>3 MILE</u> | <u>5 MILE</u> |
|------------------|---------------|---------------|---------------|
| POPULATION       | 5,472         | 73,815        | 133,595       |
| MEDIAN HH INCOME | \$77,316      | \$71,186      | \$86,888      |
| SOME COLLEGE +   | 72.0%         | 71.3%         | 74.7%         |
| DAYTIME POP      | 18,691        | 58,977        | 89,662        |