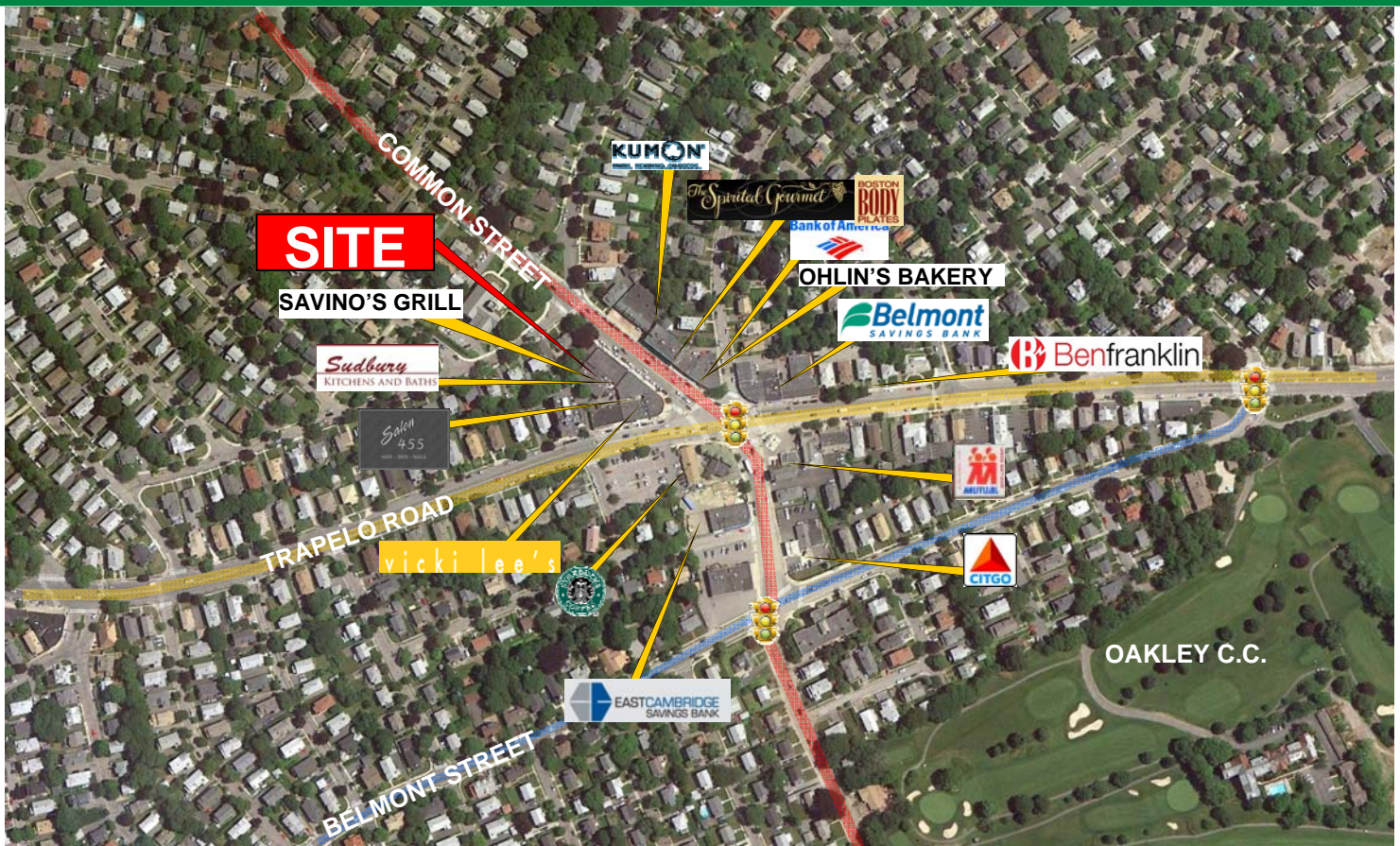


447 COMMON STREET

BELMONT, MASSACHUSETTS

AVAILABLE: 3,245 ± SF W/ FULL BASEMENT

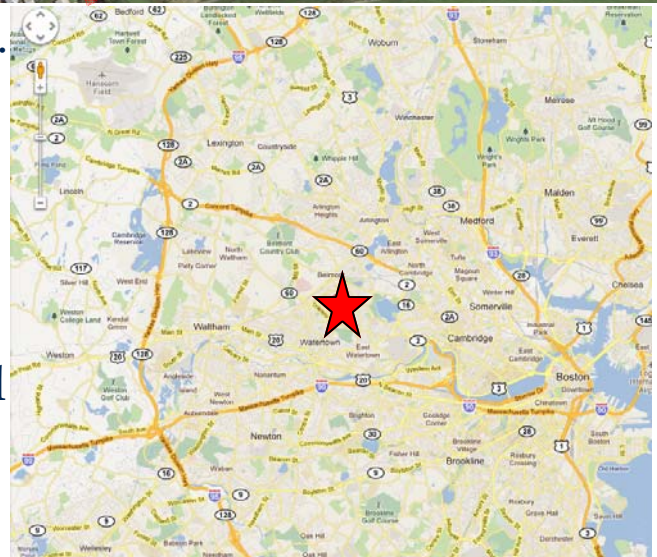


In the heart of Cushing Square Belmont.

1/2 mile from Oakley Country Club

One block from planned Cushing Square Retail Development

Convenient to Belmont, Watertown and Cambridge .



CONVISER PROPERTY GROUP, INC.

858 WASHINGTON STREET - SUITE 306, DEDHAM, MA 02026

OFFICE: (781) 320-0600 ■ FAX: (781) 791-4955 ■ WWW.CONVISERPG.COM

FOR MORE INFORMATION:

JIM CONVISER ■ JIM@CONVISERPG.COM ■ MOBILE: (617) 839-0456



No warranty or representation, expressed or implied, is made as to the accuracy of the information contained herein, and same is submitted subject to errors, omissions, change in price, rental or other conditions, or withdrawal without notice.

447 COMMON STREET

BELMONT, MASSACHUSETTS

AVAILABLE: 3,245 ± SF W/ FULL BASEMENT



PROJECT INFORMATION:

SPACE AVAILABLE:
3,245 SF W/ FULL BASEMENT

AVAILABILITY
IMMEDIATE

PARKING:
ON STREET

TRAFFIC COUNTS:
17,600 ADT- TRAPELO ROAD

DEMOGRAPHIC INFORMATION:

1 MILE

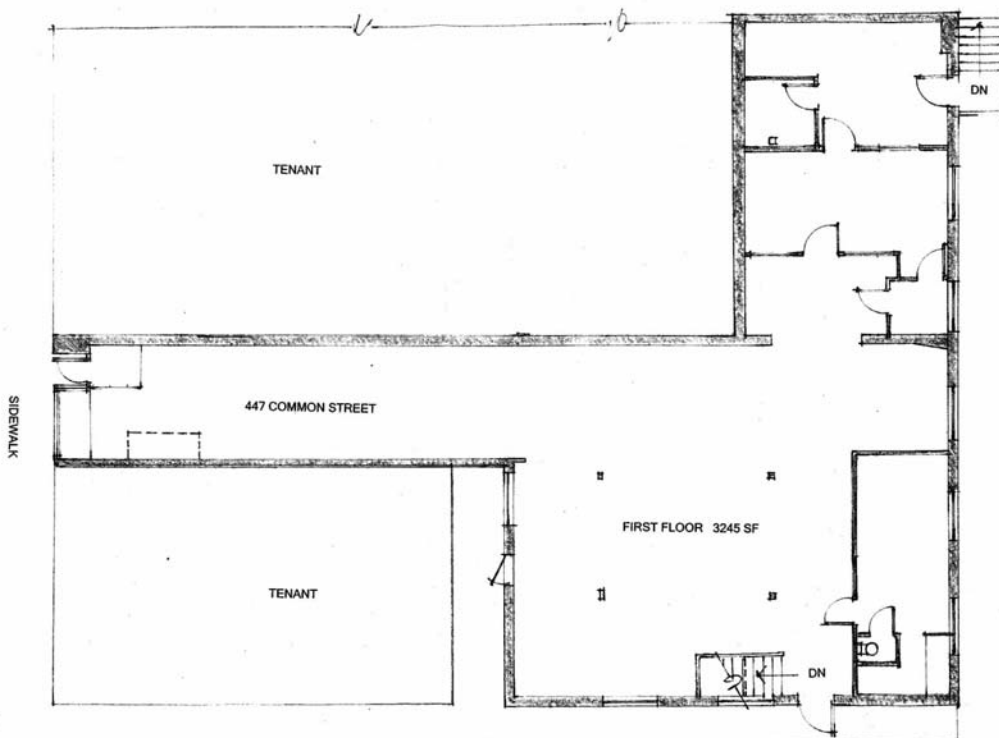
POPULATION 28,630
DAYTIME POP 5,475
MED HH INC \$83,975
SOME COLLEGE % 78.5%

3 MILE

POPULATION 218,650
DAYTIME POP 109,733
MED HH INC \$70,584
SOME COLLEGE % 75.5%

5 MILE

POPULATION 617,195
DAYTIME POP 363,476
MED HH INC \$68,214
SOME COLLEGE % 75.1%



CONVISER PROPERTY GROUP, INC.

858 WASHINGTON STREET - SUITE 306, DEDHAM, MA 02026

OFFICE: (781) 320-0600 ■ FAX: (781) 791-4955 ■ WWW.CONVISERPG.COM

FOR MORE INFORMATION:

JIM CONVISER ■ JIM@CONVISERPG.COM ■ MOBILE: (617) 839-0456



No warranty or representation, expressed or implied, is made as to the accuracy of the information contained herein, and same is submitted subject to errors, omissions, change in price, rental or other conditions, or withdrawal without notice.