

RETAIL FOR LEASE
1,660 ± SF + 1,151 SF BASEMENT



2-6 SOUTH HUNTINGTON AVENUE
Boston (Mission Hill), Massachusetts



Former Quizno's located in the heart of Boston's Mission Hill Neighborhood at the intersection of Huntington Avenue & S. Huntington Avenue with a MBTA Bus Stop & Green "E" Line Stop (Mission Hill)



2-6 SOUTH HUNTINGTON AVENUE

Boston (Mission Hill), Massachusetts



PROJECT INFORMATION:

AVAILABLE: 1,660 ± SF
1,151 ± SF Basement
NNN: \$3.00

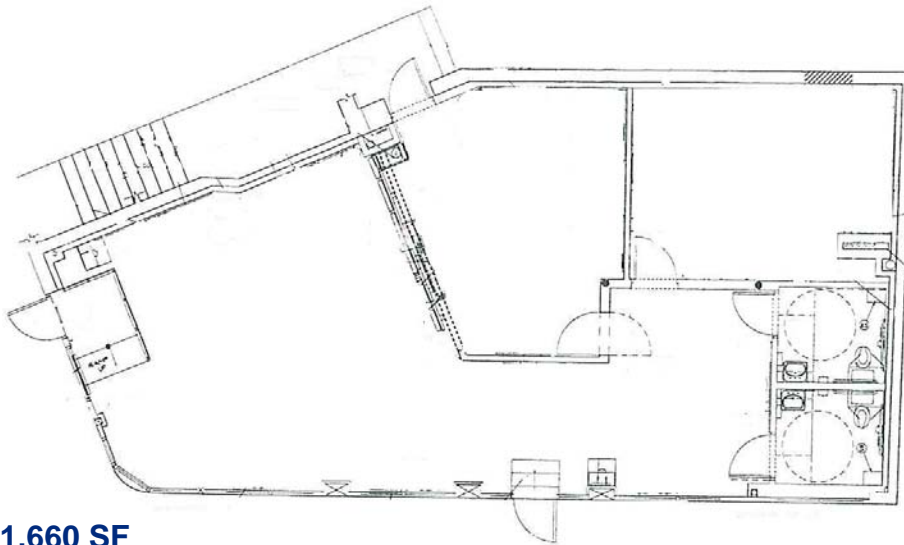
Newly constructed with venting,
grease traps and ADA compliant

DEMOGRAPHIC INFORMATION:

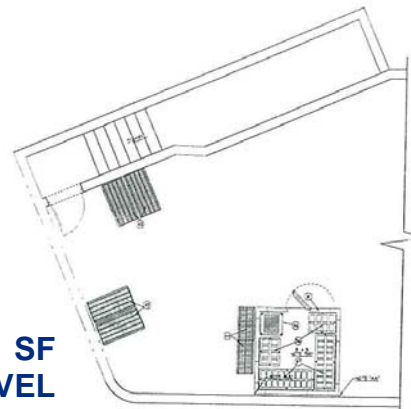
.25 Mile
POPULATION 5,337
DAYTIME POPULATION 1,548
MEDIAN HH INCOME \$36,669

.5 Mile
POPULATION 15,605
DAYTIME POPULATION 18,596
MEDIAN HH INCOME \$49,016

.75 Mile
POPULATION 33,916
DAYTIME POPULATION 37,464
MEDIAN HH INCOME 53,006



1,660 SF
STREET LEVEL



1,151 SF
BASEMENT LEVEL

FOR MORE INFORMATION:

ADAM CONVISER/ adam@conviserpg.com / (617) 593-1700

JIM CONVISER / jim@conviserpg.com / (617) 839-0456

SCOTT MORIYAMA/ scott@conviserpg.com / (781)799-8184

CONVISER PROPERTY GROUP, INC.

858 Washington Street, Suite 306, Dedham, MA 02026

Office: (781) 320-0600 / Fax: (617) 663-6300 / www.conviserpg.com