

**RETAIL FOR LEASE  
1,260 SF + 1,554 SF LOWER LEVEL**

**1663 MASSACHUSETTS AVENUE  
Cambridge, Massachusetts**



FOR MORE INFORMATION:

ADAM CONVISER

ADAM@CONVISERPG.COM

MOBILE : (617) 593-1700

JIM CONVISER

JIM@CONVISERPG.COM

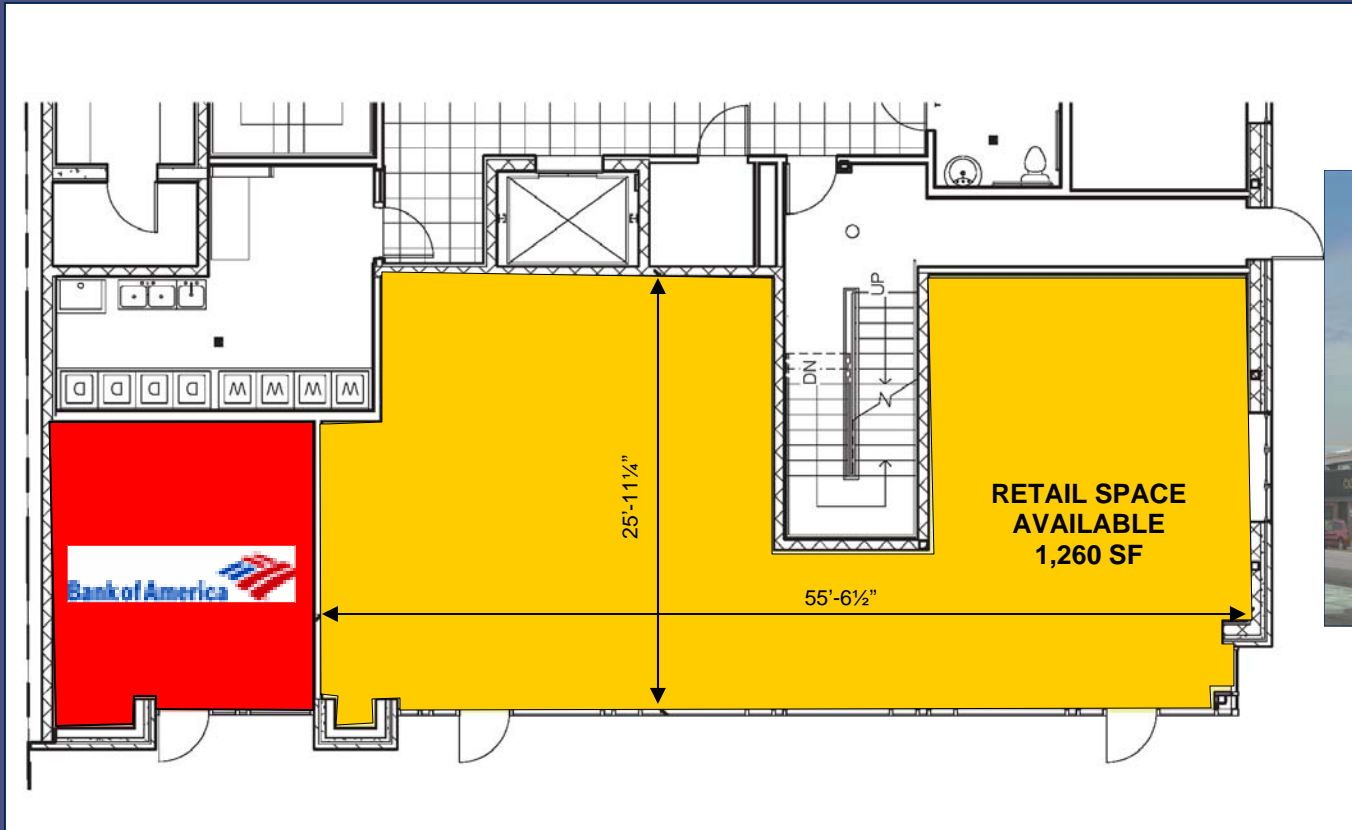
MOBILE : (617) 839-0456

CONVISER PROPERTY GROUP, INC. 858 WASHINGTON STREET- SUITE 306, DEDHAM, MA 02026

OFFICE: (781) 320-0600 ■ FAX: (617) 663-6300 ■ WWW.CONVISERPG.COM

# 1663 MASSACHUSETTS AVENUE

## Cambridge, Massachusetts



### PROJECT INFORMATION:

SPACE AVAILABLE: 1,260 SF + 1,554 SF LOWER LEVEL  
 AVAILABILITY: SUMMER 2009  
 PARNING: ON STREET  
 TRAFFIC COUNTS: 20,100 VPD

### DEMOGRAPHIC INFORMATION:

	.25 MILE	.5 MILE	1 MILE
POPULATION	4,448	14,634	59,588
DAYTIME POP	1,759	7,432	38,424
MEDIAN HH INCOME	\$67,158	\$67,481	\$63,931
SOME COLLEGE %	95.5%	93.1%	84.1%

### FOR MORE INFORMATION:

ADAM CONVISER  
 JIM CONVISER

ADAM@CONVISERPG.COM  
 JIM@CONVISERPG.COM

MOBILE : (617) 593-1700  
 MOBILE : (617) 839-0456

CONVISER PROPERTY GROUP, INC. ■ 858 WASHINGTON STREET-SUITE 306, DEDHAM, MA ■ OFFICE: (781) 320-0600 ■ FAX: (617) 663-6300

No warranty or representation, expressed or implied, is made as to the accuracy of the information contained herein, and same is submitted subject to errors, omissions, change in price, rental or other conditions, or withdrawal without notice.